

Wisconsin Lead Service Line Inventory Technical Assistance Program

WATER SERVICE LINE INVENTORY DEVELOPMENT AND IMPROVEMENT PLAN

Wittenberg Municipal Water and Sewer Utility, PWSID: 45904650

September 27, 2024

Overview

Your water system must develop and maintain an inventory of all service line materials within your service area, as required under the U.S. Environmental Protection Agency's (EPA) Lead and Copper Rule Revisions (LCRR). Your initial service line inventory must be submitted to the Wisconsin Department of Natural Resources (DNR) by **October 16, 2024**.

As part of the DNR's service line inventory technical assistance program, Jacobs Engineering prepared an inventory of the service line materials at your water system to meet the initial LCRR inventory requirements. This plan summarizes the initial inventory development and offers guidance for your system to identify and track information on service line material during normal operations.

The following key topics are covered in this document, providing essential information and guidance for maintaining and submitting your initial inventory:

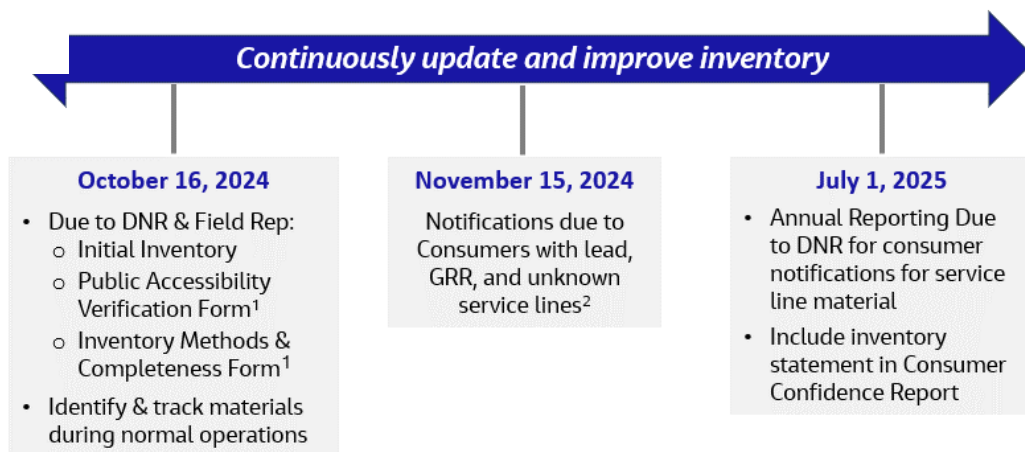
- Section 1. LCRR Background – Initial Inventory Requirements and Definitions
- Section 2. Initial Service Line Inventory for Your Water System
- Section 3. Identifying and Tracking Service Line Materials During Normal Operations
- Section 4. Next Steps for Compliance

Additionally, this plan includes the following attachments for your use:

- Attachment A – Your Water System's Initial Service Line Inventory
- Attachment B – Procedure for Visual Identification of Service Line Material
- Attachment C – Field Identification Form to Collect Service Line Material
- Attachment D – Map of Water System Services
- Attachment E – Addresses Requiring Consumer Notifications

There are additional actions your water system must take to comply with the initial LCRR inventory requirements, which are summarized in the graphic below and further detailed in **Section 4 Next Steps for Compliance**. More information on the DNR's inventory requirements is available here: <https://dnr.wisconsin.gov/topic/DrinkingWater/LSLInventoryRequirements.html>.

LCRR Regulatory Timeline for Initial Inventory



¹ Forms are available at <https://dnr.wisconsin.gov/topic/DrinkingWater/LSLInventoryRequirements.html>; Systems may submit information requested by these forms in a different format.

² Must notify new customers at the time-of-service initiation.

Section 1. LCRR Background - Initial Inventory Requirements and Definitions

The initial service line materials inventory (inventory) requirements under the LCRR are summarized below to assist your water system in understanding the new requirements (EPA, 2021; 2022; 2023a; 2024a; 2024b). The remaining sections in this plan will cover these requirements in more detail.

The DNR's Service Line Inventory Requirements for LCRR website contains relevant documents and forms that water systems are encouraged to reference for the most current requirements: <https://dnr.wisconsin.gov/topic/DrinkingWater/LSLInventoryRequirements.html>.

The inventory includes the entirety of the service line from the water main or a well to the building inlet/structure, for all service lines regardless of ownership status. The service line may be owned entirely by the water system or customer, or in some cases, ownership may be split between the water system and the customer. **Figure 1a** provides a visual representation for the typical service line ownership of a single-family home in a city or village and **Figure 1b** provides a visual representation for the typical service line ownership in a mobile home in a park. The ownership terms represented in the DNR materials inventory template can be defined as follows:

- **Street-Side:** The portion of the water service line that is typically owned by the water system, which usually includes the service line from the water main, or a well, to a curb stop or shut off valve.
- **Property-Side:** The portion of the water service line that is typically *not* owned by the water system, which usually includes the service line from a curb stop or shut off valve to the interior of the building or structure.

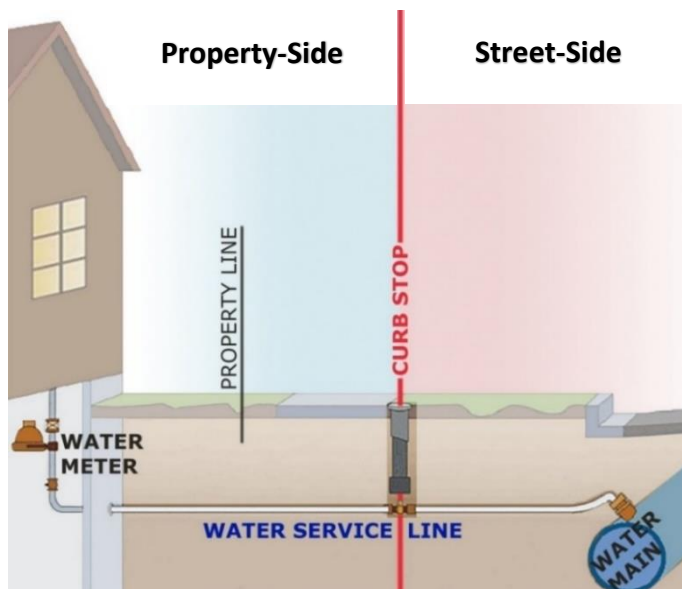


Figure 1a –Single Family Home Service Line Ownership Responsibilities. Source: <https://dnr.wisconsin.gov/aid/documents/EIF/LeadServiceLineFunding.html>

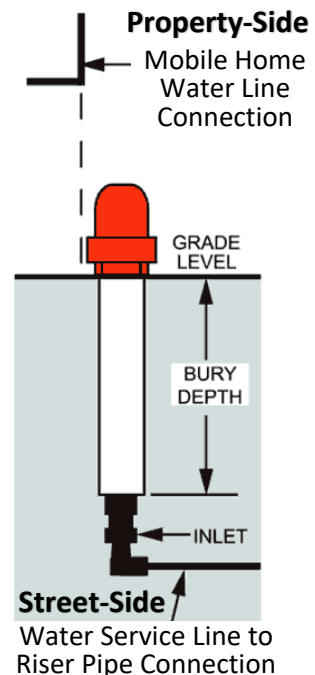


Figure 1b –Mobile Home Park Service Line Ownership

The inventory must include all service lines regardless of the actual or intended use of the service line. This includes:

- Non-potable service lines such as fire suppression or those designated for emergency.
- Service lines connected to vacant or abandoned lots or buildings, even if they are unoccupied and water service is turned off.
- Service lines connecting multiple units or buildings on a property.

1.1 Service Line Material Classification

Each service line, or portion of the service line where ownership is split, must be characterized as lead, galvanized requiring replacement (GRR), lead status unknown (unknown), or non-lead (or the actual material) as detailed in **Table 1**. In addition, a *single classification* for the entire service line is required when ownership is split as shown in **Table 2**.

Table 1. Service Line Material Classifications

Material	Description
Lead	Any portion of pipe that is made of lead, which connects the water main (or well) to the building inlet.
GRR	A galvanized service line that is or was at any time downstream of a lead service line; or is currently downstream of an unknown service line.
Non-lead	A service line that is determined through an evidence-based record, method, or technique not to be lead or GRR.
Unknown	A service line where the material is not known to be lead, GRR, or a non-lead service line, such as where there is no documented evidence supporting material classification.

Note: Lead goosenecks, pigtails, and connectors are not classified as a lead service line under the LCRR. However, forthcoming federal requirements may require water systems to track lead connectors in their inventories and systems are encouraged to track this information as available.

Table 2. Classifying Service Line Materials When Ownership Is Split

Street-Side Portion	Property-Side Portion	Classification for Entire Service Line
Lead	Lead	Lead
	GRR	
	Non-lead	
	Unknown	
Non-lead and never previously lead	Lead	Lead
	Non-lead, material other than galvanized	Non-lead
	Non-lead, specifically galvanized pipe material	
Unknown	Unknown	
Non-lead, but system is unable to demonstrate it was not previously Lead	GRR	GRR
Unknown	Lead	Lead
	GRR	GRR
	Non-lead	Unknown
	Unknown	

1.2 Information to Identify Service Line Material

To prepare the initial inventory, water systems are required to review all available record types and information sources that fall into the categories summarized in **Figure 2** (EPA, 2021). The specific data and records reviewed to create your water system's initial inventory are described in **Section 2 Initial Service Line Inventory**.



Figure 2 – LCRR Records Review Requirements for Initial Inventory.

Systems must also identify and track information on service line materials as they are encountered during normal operations, which is further detailed in **Section 3 Identifying Service Line Materials During Normal Operations**. In addition, there are other actions your water system must take to comply with the initial LCRR inventory requirements as outlined in **Section 4 Next Steps for Compliance**, including a detailed checklist (**Table 5**).

Section 2. Initial Service Line Inventory for Your Water System

As part of the DNR's service line inventory technical assistance program, Jacobs Engineering (Jacobs) prepared an initial LCRR inventory for your water system that is provided in **Attachment A**. Your inventory was prepared using the DNR's template and in accordance with federal and state-specific requirements (DNR, 2024; EPA, 2021). **Attachment D** provides a map identifying the locations of all the service lines inventoried for your water system. **Attachment E** provides a list of locations that require consumer notification that their water service is lead, galvanized requiring replacement, or lead status unknown.

Your initial inventory was developed based on reviewing historical records specified in the LCRR (outlined in **Figure 2** above) to determine service line materials using information available from your water system. Jacobs coordinated with your system, and performed a site visit, to collect the available information and records to create your initial inventory. The specific records and data reviewed to develop the initial inventory for your water system is summarized in **Table 3**.

Based on the initial inventory provided as part of this plan, **Table 4** summarizes the service line material classifications for your system as a preliminary overview of your inventory status. Each time you submit your inventory, the DNR will prepare a summary of your service line classifications for reporting to EPA.

It is important to note that your water system is responsible for reviewing the inventory for accuracy and completeness and submitting to the DNR by the October 16, 2024, deadline, as well as updating and maintaining the inventory.

You are also required to identify and track information on service line materials as they are encountered during normal operations as detailed in the following section. **Specific compliance actions your water system must address to comply with the initial LCRR inventory requirements are provided in *Section 4 Next Steps for Compliance*.**

Table 3. Summary of Water System Records Reviewed to Develop Your Initial Inventory

Record Title	Record Description
Ellms Street & Reed Street	Construction Drawings or Records and System Maps
Home Street Sanitary Sewer and Water Extension	Construction Drawings or Records and System Maps
Howard St	Construction Drawings or Records and System Maps
Master Water Main Map	Construction Drawings or Records and System Maps
Mohawk Street	Construction Drawings or Records and System Maps
North Genesee Street and East Grand Avenue Sidewalk Improvements	Construction Drawings or Records and System Maps
Reed & Harrison Sanitary Sewer and Water Main Plan	Construction Drawings or Records and System Maps
Sanitary Sewer Replacement Contract "A-04"	Construction Drawings or Records and System Maps
Webb Street Reconstruction Record Drawings	Construction Drawings or Records and System Maps
Wittenberg Business Park Phase 1&2 Infrastructure Improvements Contract "A-06"	Construction Drawings or Records and System Maps
Pioneer St Water Mains	Installation, Maintenance or Replacement Permits or Records
Sanitary Sewer Service Location Record	Installation, Maintenance or Replacement Permits or Records
Active Meter Information	Materials Inventory
Hunter Street Utility Construction	Other
1970 Construction Specifications for Watermain	Specifications, Standards, Ordinances, Plumbing Codes or SOPs
Meisner Street Materials Specifications	Specifications, Standards, Ordinances, Plumbing Codes or SOPs
Mohawk Street Improvements Project Manual	Specifications, Standards, Ordinances, Plumbing Codes or SOPs
Webb Street Water Main Extension Technical Specifications	Specifications, Standards, Ordinances, Plumbing Codes or SOPs

Note: The information on this page should be used to complete the DNR's [LCRR Inventory Methods & Completeness Form](#) (See **Table 5**).

Table 4. Preliminary Summary of Service Line Material Classifications

<i>Service Line Material Classification</i>	<i>Street-side portion</i>	<i>Property-side portion</i>	<i>Classification for Entire Service Line</i>
Lead	0	0	0
Galvanized Requiring Replacement (GRR)	0	1	1
Lead Status Unknown	391	436	447
Non-lead	75	29	18
<i>Total Number of Service Connections: 466</i>			

Note: There are consumer notice requirements for service lines classified as lead, GRR, and unknown that are described in *Section 4 Next Steps for Compliance*.

Section 3. Identifying and Tracking Service Line Materials During Normal Operations

As part of the initial LCRR inventory requirements, water systems must identify and track information on service line material as they are encountered during the course of normal operations. You should treat the inventory as a living dataset that is continuously updated over time. Your water system can have service lines categorized as unknown in the initial inventory submission; however, the number of unknowns in the inventory should be reduced over time, as you gather new information through normal day-to-day operations and with any proactive material identification activities in which your water system is engaged.

It is strongly recommended that systems take action to reduce the number of unknowns in the inventory and begin tracking service line material as they are encountered during normal operations before the LCRR compliance date.

The graphic and information provided below presents strategies for all water system types to continuously update and validate your inventory during the course of routine day-to-day maintenance operations.

Routine Maintenance Activities Where Your System Could Collect Service Line Information

Inventory activities should be considered as something that can be worked into the day-to-day activities of your system rather than treated as an independent effort.

Opportunities for information collection include (if applicable):

- Water meter reading or repair
- Service line and/or water main repair or replacement
- Any maintenance inside or on properties
- Backflow prevention or cross connection control inspections
- Other system or capital improvement projects

Your system should consider developing a standard process now to document how your staff or contractors will collect and use field data to update your inventory.

3.1 Procedures for Collecting Service Line Material Information

Capturing information on service lines collected during normal operations will enable your system to continuously update and improve your inventory by identifying unknown materials for which no records were found and verifying the accuracy of records-based material classification. As additional data is collected, you should continue to track and update material type and the source of information used to classify each service line in your inventory spreadsheet (**Attachment A**) or database.

To assist your water system with implementing a process to identify and track service line materials during normal operations, the following documents are provided for your use:

Attachment B – Procedure for visual identification of service line material

This document provides guidance for visual identification of your service line materials that can be used when service lines are encountered during day-to-day operations and routine activities.

Attachment C – Field Identification Form to collect service line material

- **This can be used as a template to gather and track relevant service line inventory information for your water system.**
- **The form is intended to record all inspection and verification information when service line materials are accessible and exposed during normal day-to-day investigation or verification activities.**
- **For accuracy and best practice, you can attach photographs to this form whenever possible as a visual record of the field inspection.**

Attachment D – Map of Water System Services

- **Water systems should further prioritize the oldest unknown material services first and work their way to newer unknown service lines**
- **Utilize available records such as well construction reports, city/county/state construction permits, occupancy permits, contractor invoices or similar documents to identify the year of water service line installation and materials.**

3.2 Additional Ways to Identify Unknown Service Line Materials

In addition to identifying and tracking service line information during normal operations, water systems are encouraged to consider performing service line investigations to further reduce the number of unknowns. The unknowns for your water system were summarized in **Table 4** above for reference.

There are several investigation methods and strategies for prioritizing service line investigations that your system can proactively implement to reduce the number of unknowns. Examples are described below that your system can consider. Additional information is available in EPA's inventory guidance (EPA, 2022; 2023a). Note that DNR approval may be required, and water systems are encouraged to contact DNR before implementation of additional methods.

- **Prioritize service line investigations** based on:
 - Service line materials identified as '*unknown- may contain lead or galvanized*' (installed before the federal lead ban in 1986). See **Attachment D** for a map that identifies the service lines that fall into this category.
 - Vulnerable or environmental justice populations; and
 - Occupied buildings (rather than unoccupied structures).
- **Select investigation methods**, including:
 - Visual identification of service line material by resident,
 - Mechanical or vacuum excavation, and
 - Water quality sampling.

Section 4. Next Steps for Compliance

You must submit your initial inventory to the DNR and your field representative by **October 16, 2024**, and address the additional requirements outlined below. Jacobs will not submit your inventory for you. If you find new service line information after the Jacobs site visit, you are encouraged to update your inventory to maintain its accuracy. You can make updates directly in your inventory spreadsheet (**Attachment A**) and submit your updated inventory directly to the DNR through email by the October 16, 2024, deadline.

In addition to submitting your inventory by October 16, 2024, you must also do both of the following:

- Make your inventory publicly accessible and provide verification to the DNR that your inventory has been made publicly accessible by filling out, signing and emailing the [Public Accessibility Verification Form](#) to DNRDGLeadCopperInventories@wisconsin.gov, and copying your DNR field representative.
- Fill out, sign and email the [Inventory Methods and Completeness Verification](#) form to DNRDGLeadCopperInventories@wisconsin.gov, and copy your DNR field representative.
- By November 15, 2024, send consumer notices to all consumers with lead, GRR, or unknown service line materials (**Attachment E**).

Submit your Initial Inventory and forms to DNR by email to DNRDGLeadCopperInventories@wisconsin.gov and your field representative by **October 16, 2024.**

Jacobs will NOT submit your inventory for you.

For more information on the DNR's inventory requirements, visit:

<https://dnr.wisconsin.gov/topic/DrinkingWater/LSLInventoryRequirements.html>

For additional questions, contact the DNR by email at:

DNRDGLeadCopperInventories@wisconsin.gov

Table 5 below is a compliance checklist outlining the initial LCRR inventory requirements that your water system must complete and their associated deadlines. It is intended to assist your system with addressing the necessary compliance requirements.

In addition, the EPA is in the process of promulgating another federal rule, referred to as the Lead and Copper Rule Improvements (LCRI). While the LCRI is not expected to change the initial inventory requirements, there may be more stringent inventory requirements to be aware of in the future (EPA, 2023b).

Table 5. Checklist of LCRR Requirements for Initial Inventory (Adapted from EPA, 2024a and DNR, 2024).

Due Date	Requirement	Description and Resources
October 16, 2024	<input type="checkbox"/> Initial Inventory	<ul style="list-style-type: none"> Submit to mail to: dnrdleadcopperinventories@wisconsin.gov and copy your DNR field rep. Initial inventory in DNR template provided in Attachment A. Make sure to review for accuracy before submission.
	<input type="checkbox"/> Inventory Available to Public	<ul style="list-style-type: none"> Make your inventory publicly accessible as detailed in DNR's Public Accessibility Verification Form referenced below. Examples of a publicly accessible inventory can include, but are not limited to: Displaying at a community center or water system office; Providing upon request through email, mail, etc.; Include notice in water bill; Post on website
	<input type="checkbox"/> Public Accessibility Verification Form ^a	<ul style="list-style-type: none"> Complete public accessibility verification and inventory methods and completeness forms and submit via email with the Initial Inventory. Refer to Table 3 for summary of records reviewed for your water system to assist with the methods and completeness form. Both forms are available on DNR's website: https://dnr.wisconsin.gov/topic/DrinkingWater/LSLInventoryRequirements.html
	<input type="checkbox"/> Inventory Methods & Completeness Form ^a	
	<input type="checkbox"/> Identify & track materials during normal operations ^b	<ul style="list-style-type: none"> Begin identifying and tracking service line materials as they are encountered during normal operations and update inventory (Attachments B & C). See Section 3 for more details.
November 15, 2024	<input type="checkbox"/> Initial Consumer Service Line Notice ^c	<ul style="list-style-type: none"> Provide written notice to consumers with lead, GRR, or unknown service line material within 30 days of submitting the initial inventory (Attachment E). EPA has provided templates that you can use to notify consumers of their service line material, which are accessible online: www.epa.gov/dwreginfo/lead-and-copper-rule-implementation-tools (EPA, 2024b).
Annually, beginning July 1, 2025	<input type="checkbox"/> Consumer Service Line Notice Delivery	Demonstrate that you delivered the consumer notifications and provide a copy of the notification and information materials to the DNR annually for the previous calendar year. Submit verification to dnrdleadcopperinventories@wisconsin.gov and copy your DNR field rep.
	<input type="checkbox"/> Consumer Confidence Report	Include a statement that the inventory has been prepared and provide instructions on how the public can access it.
Annually	<input type="checkbox"/> Updated Inventory	Submit updated inventories to the DNR until all lead and GRR service lines have been removed and all unknowns are confirmed to be non-lead.
	<input type="checkbox"/> Consumer Service Line Notice ^c	Provide written notice to consumers with lead, GRR, or unknown service line materials.

^a Systems may submit information requested in these forms in a different format.

^b Systems are encouraged to begin tracking service line material information as soon as possible.

^c Notices must also be provided to new customers at the time-of-service initiation.

References

- U.S. Environmental Protection Agency (EPA). 2021. National Primary Drinking Water Regulation: Lead and Copper Rule Revisions. 86 Fed. Reg. 4198.
<https://www.federalregister.gov/documents/2021/01/15/2020-28691/national-primary-drinking-water-regulations-lead-and-copper-rule-revisions>.
- U.S. Environmental Protection Agency. 2022. Guidance for Developing and Maintaining a Service Line Inventory. Retrieved from https://www.epa.gov/system/files/documents/2022-08/Inventory%20Guidance_August%202022_508%20compliant.pdf
- U.S. Environmental Protection Agency. 2023a. Developing and Maintaining a Service Line Inventory: Small Entity Compliance Guide. Retrieved from https://www.epa.gov/system/files/documents/2023-06/Final%20Small%20System%20Entity%20Inventory%20Guide_508.pdf
- U.S. Environmental Protection Agency. 2023b. National Primary Drinking Water Regulations for Lead and Copper: Improvements (LCRI). 88 FR 84878. (December 6, 2023) Federal Register <https://www.federalregister.gov/documents/2023/12/06/2023-26148/national-primary-drinking-water-regulations-for-lead-and-copper-improvements-lcri>
- U.S. Environmental Protection Agency. 2024a. LCRR Implementation Fact Sheet. Retrieved from https://www.epa.gov/system/files/documents/2024-04/revised-508_lcr-compliance-fact-sheet_4.17.24.pdf
- U.S. Environmental Protection Agency. 2024b. LCRR Frequently Asked Questions (FAQs). Retrieved from https://www.epa.gov/system/files/documents/2024-04/lead-and-copper-rule-revisions-frequently-asked-questions_4102024_508.pdf
- Wisconsin Department of Natural Resources (DNR). 2024. Service Line Inventory Requirements for LCRR. Retrieved from <https://dnr.wisconsin.gov/topic/DrinkingWater/LSLInventoryRequirements.html>

Attachment A – Your Water System’s Initial Service Line Inventory

Please refer to the spreadsheet file attached in the Jacobs email transmittal of your inventory.

Attachment B – Procedure for Visual Identification of Service Line Material

Lead Service Lines and Drinking Water Best Management Practices

LEAD IN WATER: WHAT YOU SHOULD KNOW

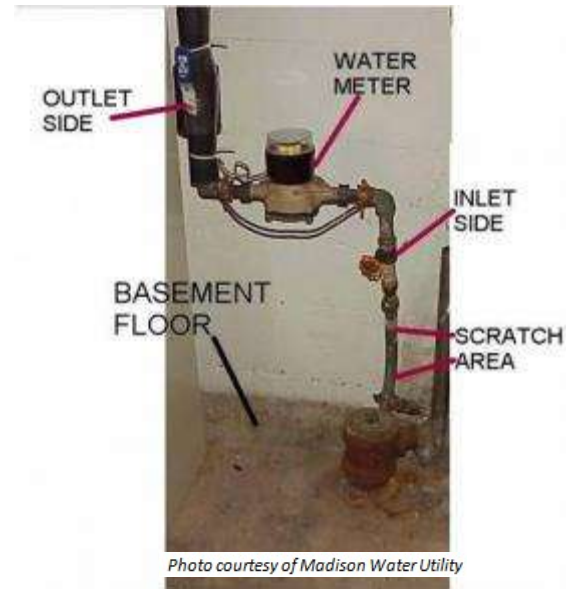
The amount of lead in water will vary based on the plumbing in a building, how much water is used, and how often it is used. Homes and business buildings built before 1951 were likely constructed with service lines made of lead, which connect the building plumbing to water mains under the street. Lead can also be found in interior plumbing pipes, solder and some plumbing fixtures.

IDENTIFYING A LEAD SERVICE PIPE

Tools needed: flathead screwdriver, refrigerator magnet

Lead pipes are dull gray in color and are soft enough to be easily scratched with a house key. A magnet will not stick to a lead pipe. A licensed plumber can determine if your service line and/or plumbing are made of lead and can replace them for you at your cost.

- Locate the water service pipe coming into the building (usually in the basement). An "inlet valve" and the water meter are installed on the pipe after the point of entry.
- Identify a test area on the pipe between the point where it comes into the building and the inlet valve.
- If the pipe is covered or wrapped, expose a small area of metal.
- Use the flat edge of a screwdriver or other tool to scratch through any corrosion that might have built up on the outside of the pipe.



Lead Pipe

If the scratched area is shiny and silver, your service line is lead. A magnet will not stick to a lead pipe.



Copper Pipe

If the scratched area is copper in color, like a penny, your service line is copper. A magnet will not stick to copper pipe.



Lead Service Lines and Drinking Water Best Management Practices

Galvanized Steel Pipe

If the scratched area remains a dull gray, and a magnet will stick to the surface, your service line is galvanized steel.



Photo courtesy of Madison Water Utility

STEPS TO REDUCE THE RISK OF LEAD IN YOUR DRINKING WATER

Lead can also be found in interior pipes and some plumbing fixtures. If you don't know whether your tap water contains lead, you should have the water tested by a certified lab. Proper sampling is required to obtain a valid result. (Note: A single test for lead level in drinking water may not be representative of the level at all times or of the average level over time.)

You can visit the DNR's website for a list of certified laboratories and to get lead sampling procedure information at: dnr.wi.gov/topic/drinkingwater/lead.html.

If your lead water service is lead, was lead and has recently been replaced or if there are other sources of lead in your internal plumbing and fixtures, following are steps you can take to reduce your exposure. Infants, small children under the age of six and women who are pregnant or breastfeeding are at special risk.

1. **Flush your plumbing.** Before using tap water for drinking, cooking, or preparing infant formula, flush your plumbing by running the cold water three minutes or longer until the water is noticeably cold. This process replaces water in the house plumbing and service line with water from the water main. Do this if the water has been standing unused in your pipes for more than six hours, such as overnight or during the work day. It is safe to shower, wash laundry and flush the toilet if you have a lead service line. These activities help flush the pipes. After any water utility work or household plumbing work, it is also important that you flush your household plumbing. Physical disturbance of the lead service line or lead piping by activities such as water main replacement, service line leaks, home plumbing repair, water meter replacement or main breaks may release lead into the water.
2. **Only drink and cook with cold water from the cold water tap.** Never drink or cook with water directly from the hot water tap. Hot water can dissolve lead from pipes and other substances that build up in the water heater. Boiling does not remove lead but can actually increase its concentration. Households with children under the age of six, or women who are pregnant or breastfeeding, should consider using bottled water or filtered tap water for formula, concentrated juices, cooking and drinking.
3. **Remove the screen and aerator from faucets, rinse out any debris, and re-attach.** Do this once a month. This will reduce the possibility that small particles that may contain lead could build up at your faucet.

Lead Service Lines and Drinking Water Best Management Practices

Other steps to consider:

- Purchase a home filtration system. Home drinking water filtration systems or pour-through filters can reduce or eliminate lead. Look for products certified by NSF/ANSI under Standard 53 for removal of lead and follow manufacturer's guidelines on installation and maintenance.
- Replace your lead service line or interior plumbing. A licensed plumber can help you assess the cost and feasibility of replacing your lead service line or interior plumbing. If you decide to do this, please call your local water utility for more information.
- Have your water tested for lead. Please consult the WDNR's website for accredited laboratories at: dnr.wi.gov/topic/labCert/certified-lab-lists.
- All children should be screened for lead poisoning, particularly if they live in a home built before 1978 with recent or ongoing renovation or if they have a sibling or playmate who has lead poisoning.

Attachment C – Field Identification Form to Collect Service Line
Material

SERVICE LINE INVENTORY Field Identification Form

This form is a suggested tool to collect all identification information when service line materials are accessible and exposed during normal day-to-day operations. The field identification form, if used, should be treated as an official record for each service line. Required fields to complete during the field identification are shown in **BOLD** text and the remaining fields are optional fields to continue improving your inventory. For accuracy and best practices, whenever possible, you can attach photographs to this form as a visual record of the field identification. For steps to visually identify the material, you may refer to this link:

<https://dnr.wisconsin.gov/sites/default/files/topic/DrinkingWater/LeadServiceLineBMPs.pdf>

GENERAL INFORMATION (REQUIRED)	GENERAL INFORMATION (OPTIONAL)
Water System Name	Site ID
Identification Date	Account No.
Address of Service Line	Photo Confirmation Taken? <input type="checkbox"/> Yes <input type="checkbox"/> No

Name of Person Completing the Form

STREET-SIDE SERVICE LINE MATERIAL INFORMATION (REQUIRED)

Was this portion of the service line visually identified? Yes No

<input type="checkbox"/> Lead	<input type="checkbox"/> Copper
<input type="checkbox"/> Galvanized	<input type="checkbox"/> Plastic
<input type="checkbox"/> Unknown – may contain lead or galvanized	<input type="checkbox"/> Ductile Iron
<input type="checkbox"/> Unknown – does not contain lead or galvanized	<input type="checkbox"/> Cast Iron
<input type="checkbox"/> Other: <i>Specify</i> _____	

STREET-SIDE SERVICE LINE MATERIAL INFORMATION (OPTIONAL)

Diameter (inches):

Lead Connector currently present? Yes No Not Known

PROPERTY-SIDE SERVICE LINE MATERIAL INFORMATION (REQUIRED)

Was this portion of the service line visually identified? Yes No

<input type="checkbox"/> Lead	<input type="checkbox"/> Copper
<input type="checkbox"/> Galvanized	<input type="checkbox"/> Plastic
<input type="checkbox"/> Unknown – may contain lead or galvanized	<input type="checkbox"/> Ductile Iron
<input type="checkbox"/> Unknown – does not contain lead or galvanized	<input type="checkbox"/> Cast Iron
<input type="checkbox"/> Other: <i>Specify</i> _____	

PROPERTY-SIDE SERVICE LINE MATERIAL INFORMATION (OPTIONAL)

Diameter (inches):

Lead Connector currently present? Yes No Not Known

METHOD OF SERVICE LINE VERIFICATION (REQUIRED)

- | | |
|---|--|
| <input type="checkbox"/> Visual inspection at the meter | <input type="checkbox"/> Mechanical or hydro-vacuum excavation |
| <input type="checkbox"/> Visual inspection during install or repair | <input type="checkbox"/> Cross-connection survey |
| <input type="checkbox"/> Other: <i>Specify</i> _____ | |

BUILDING TYPE (OPTIONAL)

- | | |
|--|--|
| <input type="checkbox"/> Single-Family Residential | <input type="checkbox"/> School or Childcare |
| <input type="checkbox"/> Multi-Family Residential | <input type="checkbox"/> Residential & In-Home Childcare |
| <input type="checkbox"/> Non-Residential | <input type="checkbox"/> Mixed Residential and Non-Residential |
| <input type="checkbox"/> Other: <i>Specify</i> _____ | |

BUILDING PLUMBING MATERIAL (OPTIONAL)

- | | |
|--|--|
| <input type="checkbox"/> Copper with lead solder | <input type="checkbox"/> Unknown |
| <input type="checkbox"/> Copper, no lead solder | <input type="checkbox"/> Not Accessible |
| <input type="checkbox"/> Galvanized | <input type="checkbox"/> Other: <i>Specify</i> _____ |

COMPLETE ONLY IF REPLACING THE STREET-SIDE SERVICE LINE (OPTIONAL)

Previous street-side service line material?

- | | |
|--|---------------------------------------|
| <input type="checkbox"/> Lead | <input type="checkbox"/> Copper |
| <input type="checkbox"/> Galvanized | <input type="checkbox"/> Plastic |
| <input type="checkbox"/> Unknown – may contain lead or galvanized | <input type="checkbox"/> Ductile Iron |
| <input type="checkbox"/> Unknown – does not contain lead or galvanized | <input type="checkbox"/> Cast Iron |
| <input type="checkbox"/> Other: <i>Specify</i> _____ | |

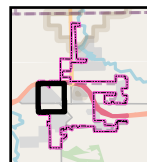
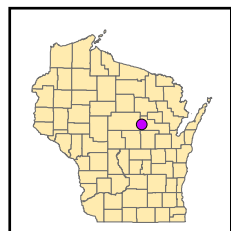
Was a Lead Connector present? Yes No Not Known

Attachment D – Map of Water System Services



Legend

- Unknown Service Line Material, May Contain Lead or Galvanized
- Wisconsin Parcels (2023)
- Water System Boundary



**Wittenberg Municipal Water and Sewer Utility (PWSID 45904650):
Initial Lead Service Line Inventory 2024**

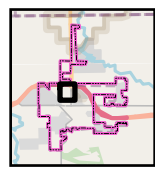
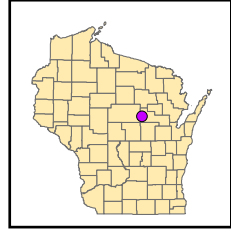
Service Lines where the street or property side material is unknown, and may contain lead
NER Region





Legend

- Unknown Service Line Material, May Contain Lead or Galvanized
- Service Line
- Wisconsin Parcels (2023)
- Water System Boundary

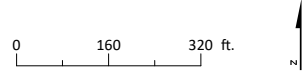


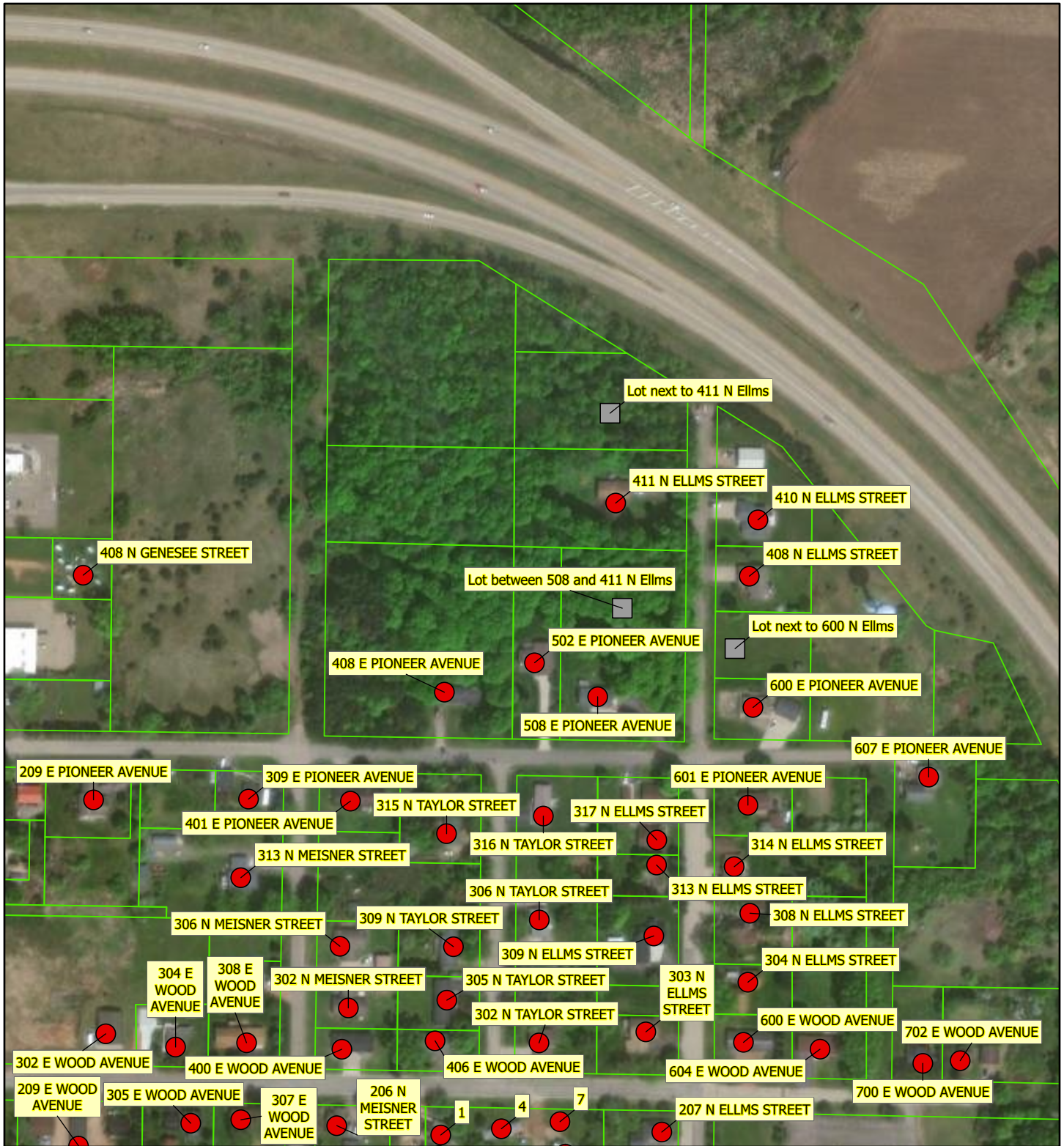
Wittenberg Municipal Water and Sewer Utility (PWSID 45904650):

Initial Lead Service Line Inventory 2024

Service Lines where the street or property side material is unknown, and may contain lead

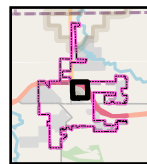
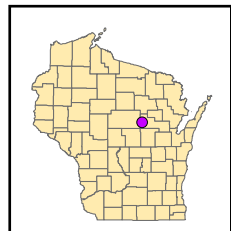
NER Region
2/11





Legend

- Unknown Service Line Material, May Contain Lead or Galvanized
- Service Line
- Wisconsin Parcels (2023)
- Water System Boundary



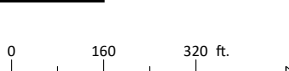
**Wittenberg Municipal Water and Sewer Utility
(PWSID 45904650):**

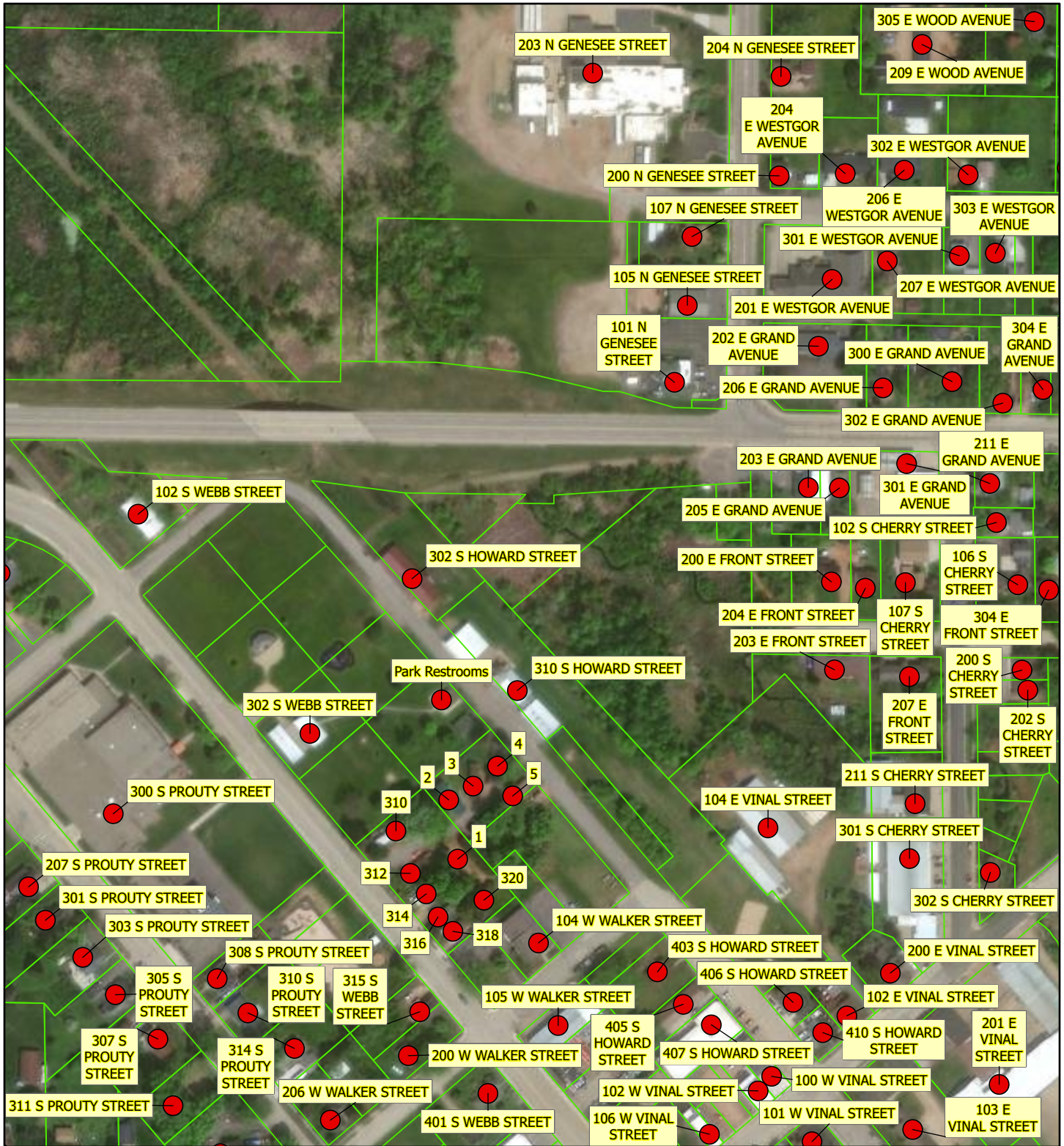
Initial Lead Service Line Inventory 2024

Service Lines where the street or property side material is unknown, and may contain lead

NER Region

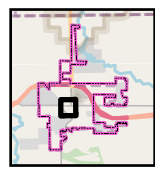
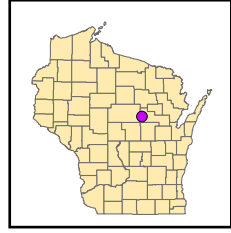
3/11





Legend

- Unknown Service Line Material, May Contain Lead or Galvanized
- Wisconsin Parcels (2023)
- Water System Boundary

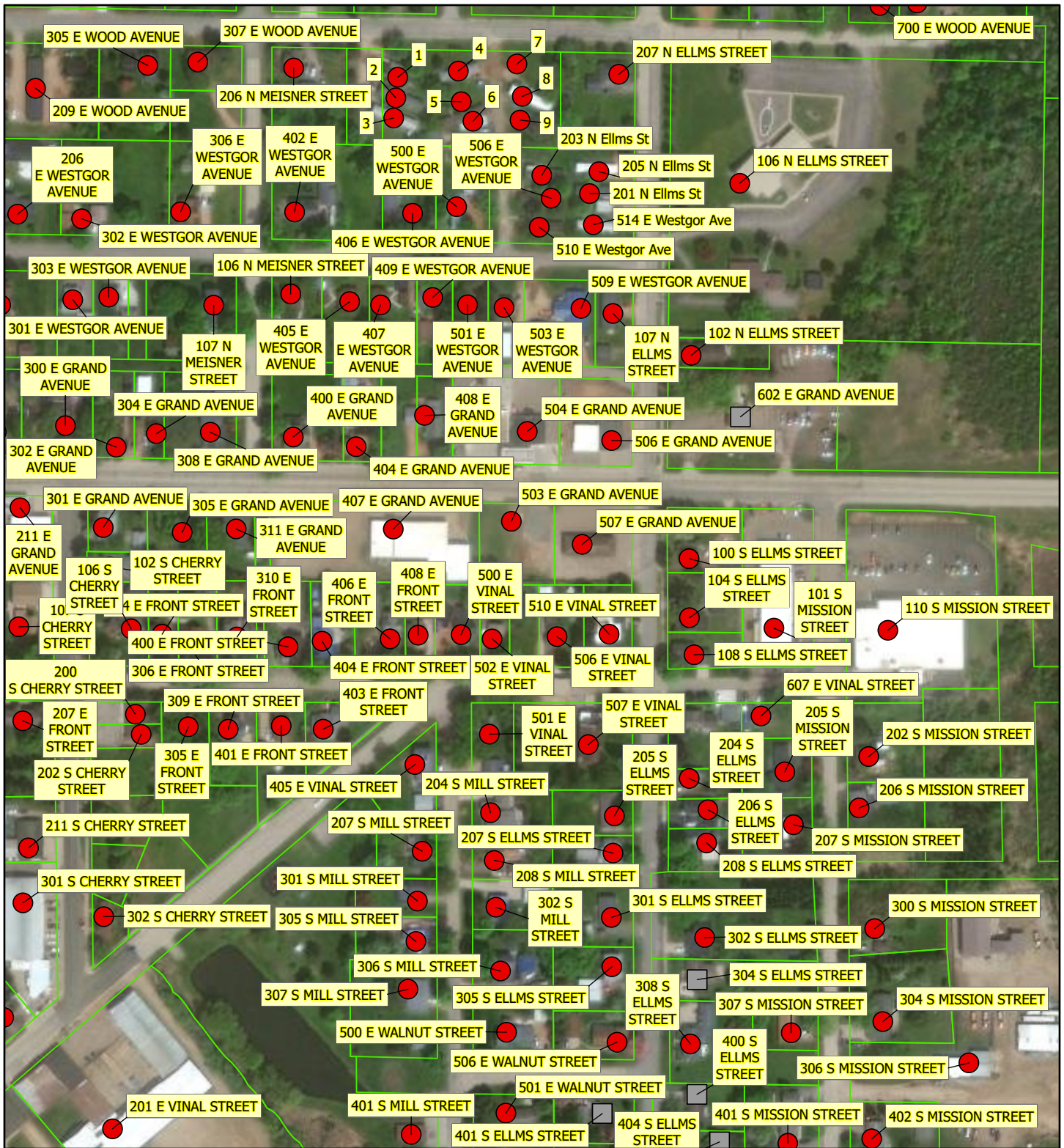


**Wittenberg Municipal Water and Sewer Utility (PWSID 45904650):
Initial Lead Service Line Inventory 2024**

Service Lines where the street or property side material is unknown, and may contain lead
NER Region

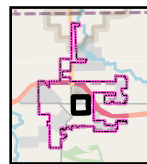
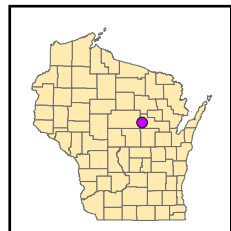
4/11





Legend

- Unknown Service Line Material, May Contain Lead or Galvanized
- Service Line
- Wisconsin Parcels (2023)
- Water System Boundary



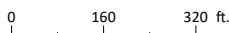
Wittenberg Municipal Water and Sewer Utility (PWSID 45904650):

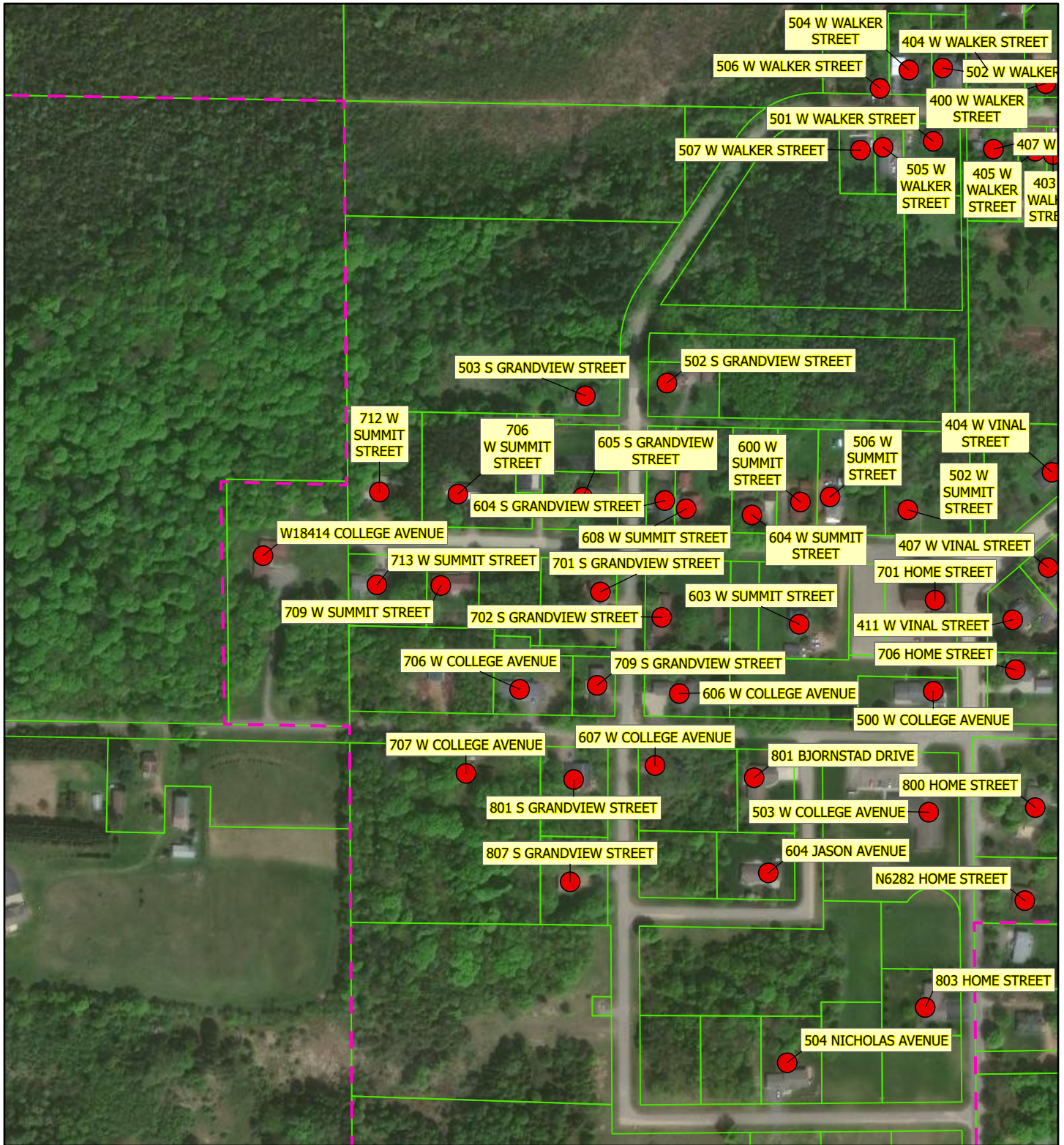
Initial Lead Service Line Inventory 2024

Service Lines where the street or property side material is unknown, and may contain lead

NER Region

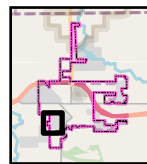
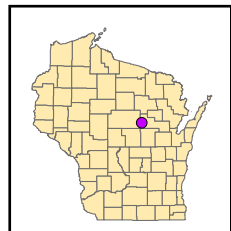
5/11





Legend

- Unknown Service Line Material, May Contain Lead or Galvanized
- Wisconsin Parcels (2023)
- Water System Boundary



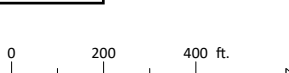
Wittenberg Municipal Water and Sewer Utility (PWSID 45904650):

Initial Lead Service Line Inventory 2024

Service Lines where the street or property side material is unknown, and may contain lead

NER Region

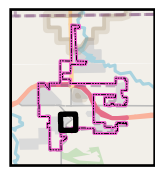
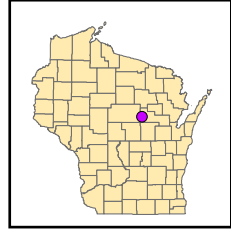
6/11





Legend

- Unknown Service Line Material, May Contain Lead or Galvanized
- Wisconsin Parcels (2023)
- Water System Boundary



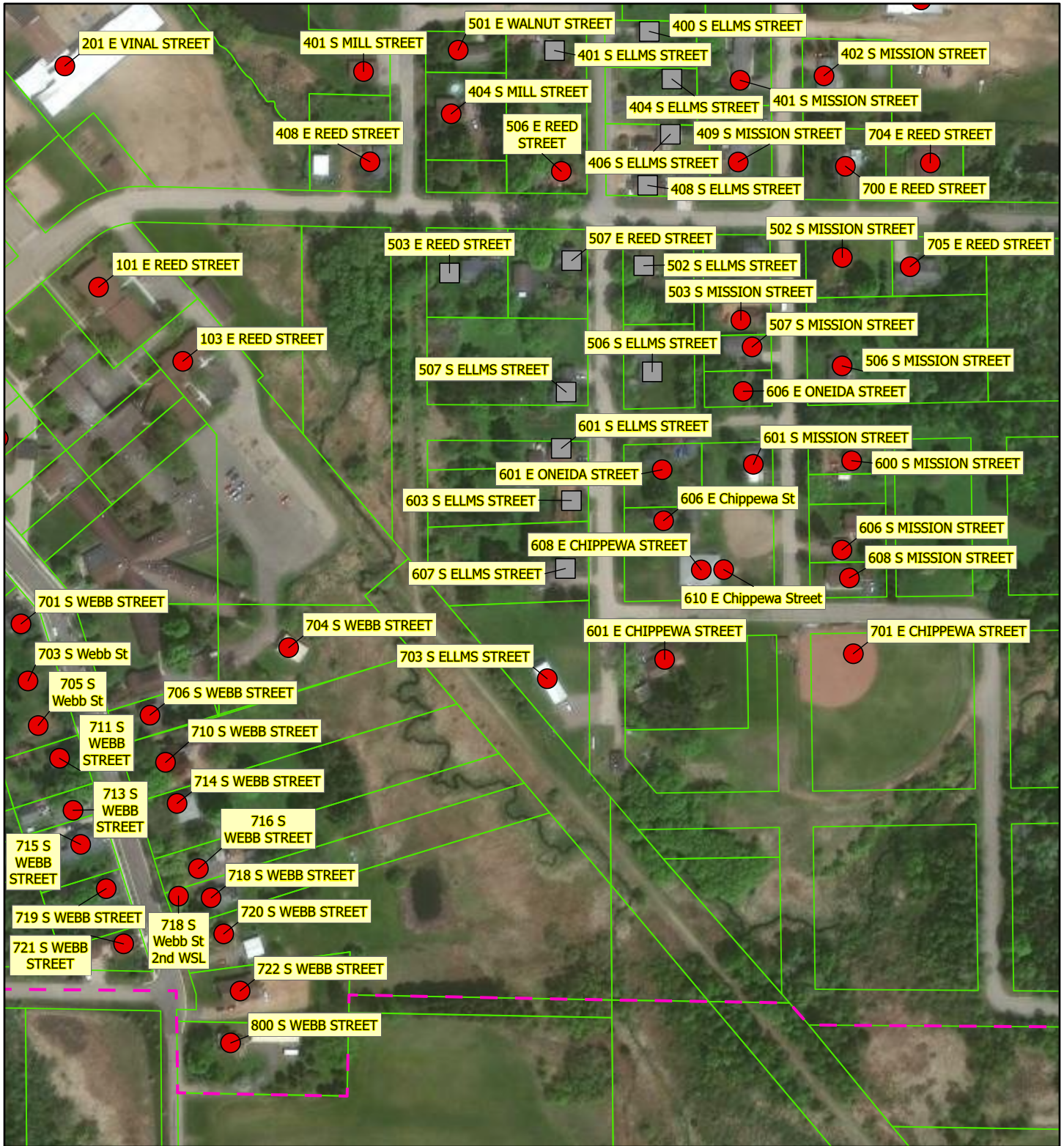
Wittenberg Municipal Water and Sewer Utility (PWSID 45904650):

Initial Lead Service Line Inventory 2024

Service Lines where the street or property side material is unknown, and may contain lead

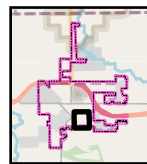
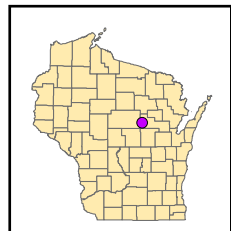
NER Region
7/11





Legend

- Unknown Service Line Material, May Contain Lead or Galvanized
- Service Line
- Wisconsin Parcels (2023)
- Water System Boundary



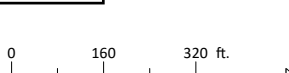
Wittenberg Municipal Water and Sewer Utility (PWSID 45904650):

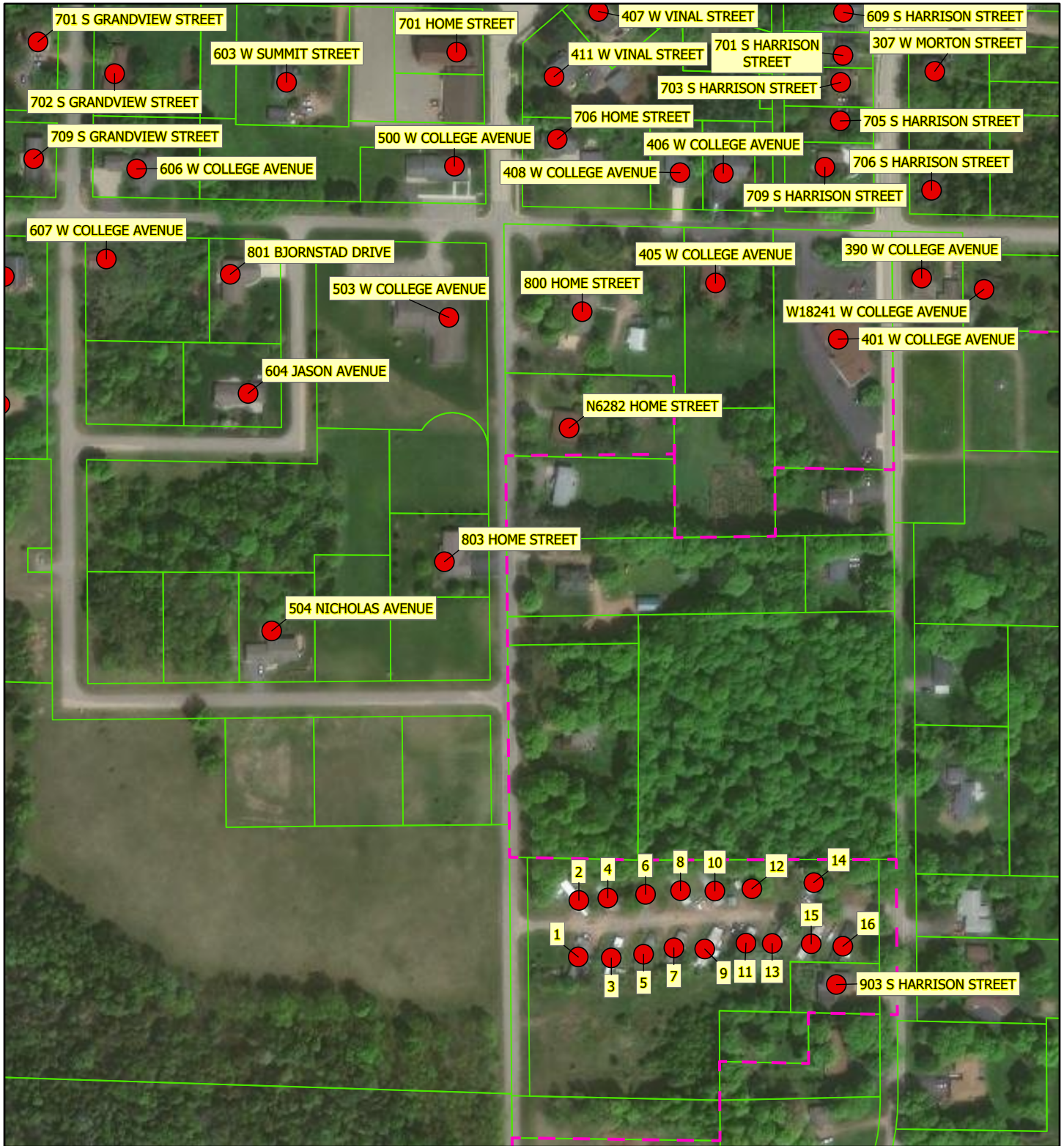
Initial Lead Service Line Inventory 2024

Service Lines where the street or property side material is unknown, and may contain lead

NER Region

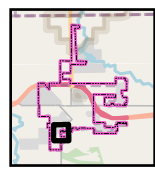
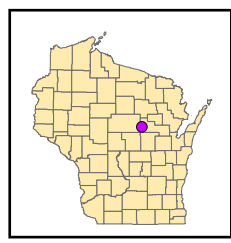
8/11





Legend

- Unknown Service Line Material, May Contain Lead or Galvanized
- Wisconsin Parcels (2023)
- Water System Boundary

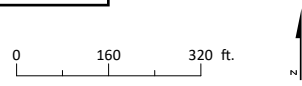


Wittenberg Municipal Water and Sewer Utility (PWSID 45904650):

Initial Lead Service Line Inventory 2024

Service Lines where the street or property side material is unknown, and may contain lead

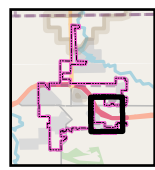
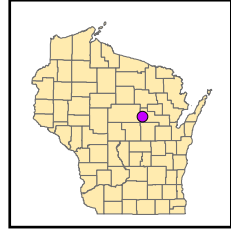
NER Region
9/11





Legend

- Unknown Service Line Material, May Contain Lead or Galvanized
- Wisconsin Parcels (2023)
- Water System Boundary

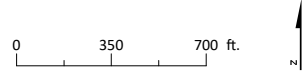


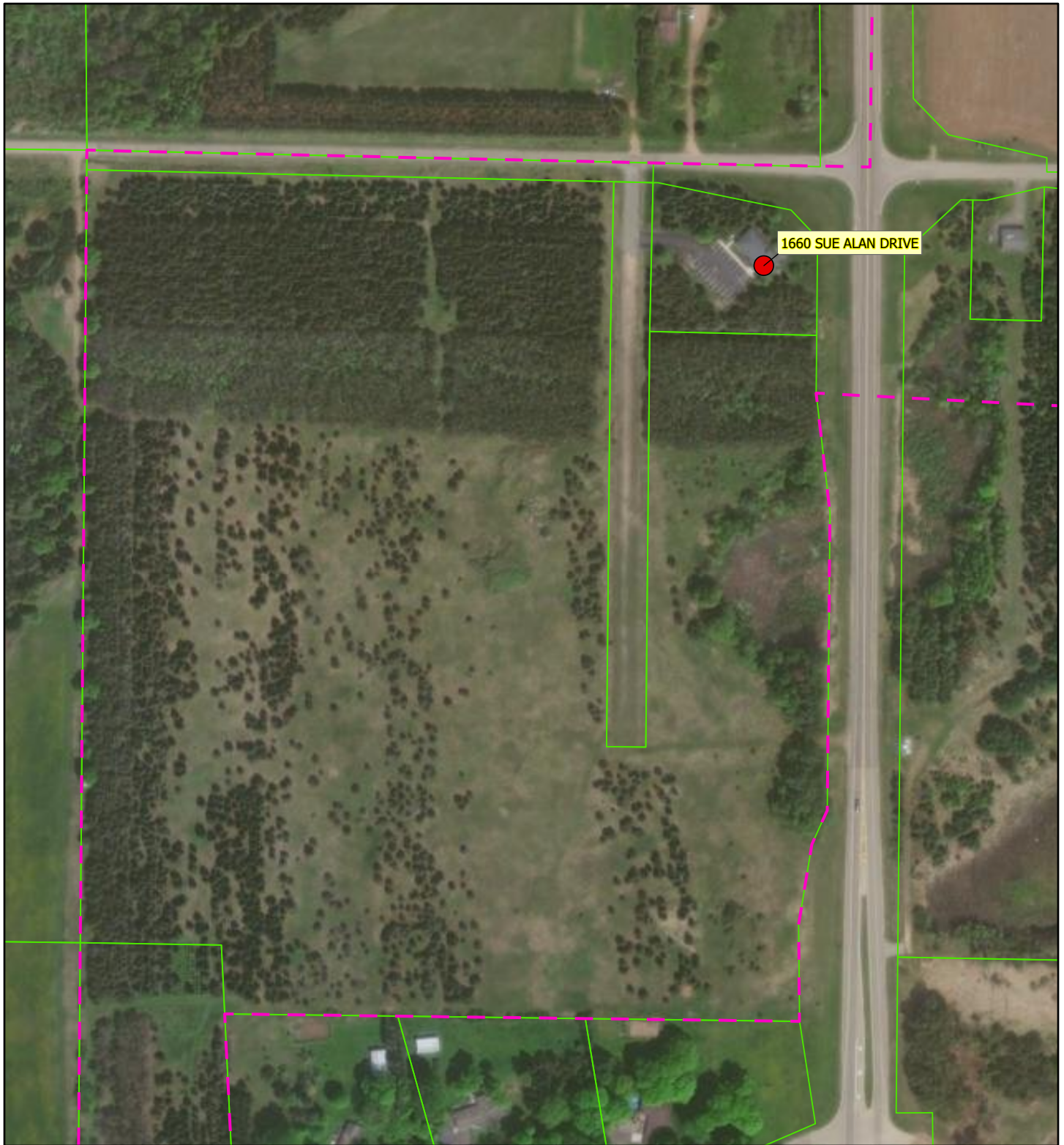
Wittenberg Municipal Water and Sewer Utility (PWSID 45904650):

Initial Lead Service Line Inventory 2024




Service Lines where the street or property side material is unknown, and may contain lead

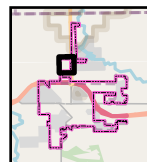
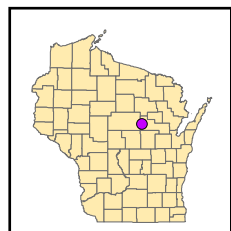
NER Region
10/11





Legend

-  Unknown Service Line Material, May Contain Lead or Galvanized
-  Wisconsin Parcels (2023)
-  Water System Boundary



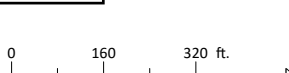
**Wittenberg Municipal Water and Sewer Utility
(PWSID 45904650):**

Initial Lead Service Line Inventory 2024

Service Lines where the street or property side material is unknown, and may contain lead

NER Region

11/11



Attachment E – Addresses Requiring Consumer Notifications

SITE ID	LOCATIONAL IDENTIFIER	CLASSIFICATION FOR ENTIRE SERVICE LINE
	305 E GRAND AVENUE	Lead Status Unknown
	311 E GRAND AVENUE	Lead Status Unknown
	407 E GRAND AVENUE	Lead Status Unknown
	503 E GRAND AVENUE	Lead Status Unknown
	507 E GRAND AVENUE	Lead Status Unknown
1	503 E WOOD AVENUE	Lead Status Unknown
2	503 E WOOD AVENUE	Lead Status Unknown
	205 E GRAND AVENUE	Lead Status Unknown
	301 E GRAND AVENUE	Lead Status Unknown
	102 S CHERRY STREET	Lead Status Unknown
3	503 E WOOD AVENUE	Lead Status Unknown
6	503 E WOOD AVENUE	Lead Status Unknown
	211 E GRAND AVENUE	Lead Status Unknown
7	503 E WOOD AVENUE	Lead Status Unknown
8	503 E WOOD AVENUE	Lead Status Unknown
5	503 E WOOD AVENUE	Lead Status Unknown
	408 E REED STREET	Lead Status Unknown
	201 E VINAL STREET	Lead Status Unknown
	103 E VINAL STREET	Lead Status Unknown
	513 S HOWARD STREET	Lead Status Unknown
	105 W VINAL STREET	Lead Status Unknown
	109 W VINAL STREET	Lead Status Unknown
	111 W VINAL STREET	Lead Status Unknown
	500 S WEBB STREET	Lead Status Unknown
	101 W VINAL STREET	Lead Status Unknown
	502 S WEBB STREET	Lead Status Unknown
	504 S WEBB STREET	Lead Status Unknown
	506 S WEBB STREET	Lead Status Unknown
	510 S WEBB STREET	Lead Status Unknown
	512 S WEBB STREET	Lead Status Unknown
	101 E REED STREET	Lead Status Unknown
	604 S WEBB STREET	Lead Status Unknown
	506 E WESTGOR AVENUE	Lead Status Unknown
510 E Westgor Ave	506 E WESTGOR AVENUE	Lead Status Unknown
514 E Westgor Ave	506 E WESTGOR AVENUE	Lead Status Unknown
201 N Ellms St	506 E WESTGOR AVENUE	Lead Status Unknown
205 N Ellms St	506 E WESTGOR AVENUE	Lead Status Unknown
	209 E WOOD AVENUE	Lead Status Unknown
	500 E WESTGOR AVENUE	Lead Status Unknown
203 N Ellms St	506 E WESTGOR AVENUE	Lead Status Unknown
	201 E WESTGOR AVENUE	Lead Status Unknown

	301 E WESTGOR AVENUE	Lead Status Unknown
	207 E WESTGOR AVENUE	Lead Status Unknown
	105 N GENESEE STREET	Lead Status Unknown
	101 N GENESEE STREET	Lead Status Unknown
	202 E GRAND AVENUE	Lead Status Unknown
	306 E WESTGOR AVENUE	Lead Status Unknown
	300 E GRAND AVENUE	Lead Status Unknown
	302 E GRAND AVENUE	Lead Status Unknown
	304 E GRAND AVENUE	Lead Status Unknown
	308 E GRAND AVENUE	Lead Status Unknown
	400 E GRAND AVENUE	Lead Status Unknown
	404 E GRAND AVENUE	Lead Status Unknown
	408 E GRAND AVENUE	Lead Status Unknown
	106 N MEISNER STREET	Lead Status Unknown
	405 E WESTGOR AVENUE	Lead Status Unknown
	407 E WESTGOR AVENUE	Lead Status Unknown
	504 E GRAND AVENUE	Lead Status Unknown
	506 E GRAND AVENUE	Lead Status Unknown
	501 E WESTGOR AVENUE	Lead Status Unknown
	503 E WESTGOR AVENUE	Lead Status Unknown
	509 E WESTGOR AVENUE	Lead Status Unknown
	107 N ELLMS STREET	Lead Status Unknown
	402 E WESTGOR AVENUE	Lead Status Unknown
	406 E WESTGOR AVENUE	Lead Status Unknown
	206 N MEISNER STREET	Lead Status Unknown
	207 N ELLMS STREET	Lead Status Unknown
	201 LIBERTY DRIVE	Lead Status Unknown
	1790 APPLEWOOD LANE	Lead Status Unknown
	1390 E GRAND AVENUE	Lead Status Unknown
	1388 E GRAND AVENUE	Lead Status Unknown
	701 E CHIPPEWA STREET	Lead Status Unknown
	608 E CHIPPEWA STREET	Lead Status Unknown
610 E Chippewa Street	608 E CHIPPEWA STREET	Lead Status Unknown
	608 S MISSION STREET	Lead Status Unknown
	606 S MISSION STREET	Lead Status Unknown
	600 S MISSION STREET	Lead Status Unknown
	601 S MISSION STREET	Lead Status Unknown
	506 S MISSION STREET	Lead Status Unknown
	606 E ONEIDA STREET	Lead Status Unknown
	507 S MISSION STREET	Lead Status Unknown
	503 S MISSION STREET	Lead Status Unknown
	502 S MISSION STREET	Lead Status Unknown
	705 E REED STREET	Lead Status Unknown
	700 E REED STREET	Lead Status Unknown
	506 E REED STREET	Lead Status Unknown
	409 S MISSION STREET	Lead Status Unknown
	401 S MISSION STREET	Lead Status Unknown

402 S MISSION STREET	Lead Status Unknown
306 S MISSION STREET	Lead Status Unknown
307 S MISSION STREET	Lead Status Unknown
304 S MISSION STREET	Lead Status Unknown
300 S MISSION STREET	Lead Status Unknown
302 S ELLMS STREET	Lead Status Unknown
506 E WALNUT STREET	Lead Status Unknown
305 S ELLMS STREET	Lead Status Unknown
301 S ELLMS STREET	Lead Status Unknown
208 S ELLMS STREET	Lead Status Unknown
401 S MILL STREET	Lead Status Unknown
404 S MILL STREET	Lead Status Unknown
501 E WALNUT STREET	Lead Status Unknown
500 E WALNUT STREET	Lead Status Unknown
306 S MILL STREET	Lead Status Unknown
305 S MILL STREET	Lead Status Unknown
301 S MILL STREET	Lead Status Unknown
302 S MILL STREET	Lead Status Unknown
207 S MILL STREET	Lead Status Unknown
204 S MILL STREET	Lead Status Unknown
405 E VINAL STREET	Lead Status Unknown
501 E VINAL STREET	Lead Status Unknown
206 S MISSION STREET	Lead Status Unknown
202 S MISSION STREET	Lead Status Unknown
110 S MISSION STREET	Lead Status Unknown
206 S ELLMS STREET	Lead Status Unknown
204 S ELLMS STREET	Lead Status Unknown
205 S MISSION STREET	Lead Status Unknown
607 E VINAL STREET	Lead Status Unknown
101 S MISSION STREET	Lead Status Unknown
108 S ELLMS STREET	Lead Status Unknown
104 S ELLMS STREET	Lead Status Unknown
510 E VINAL STREET	Lead Status Unknown
506 E VINAL STREET	Lead Status Unknown
502 E VINAL STREET	Lead Status Unknown
500 E VINAL STREET	Lead Status Unknown
408 E FRONT STREET	Lead Status Unknown
404 E FRONT STREET	Lead Status Unknown
400 E FRONT STREET	Lead Status Unknown
310 E FRONT STREET	Lead Status Unknown
306 E FRONT STREET	Lead Status Unknown
304 E FRONT STREET	Lead Status Unknown
106 S CHERRY STREET	Lead Status Unknown
403 E FRONT STREET	Lead Status Unknown
401 E FRONT STREET	Lead Status Unknown
309 E FRONT STREET	Lead Status Unknown
305 E FRONT STREET	Lead Status Unknown

	200 S CHERRY STREET	Lead Status Unknown
	202 S CHERRY STREET	Lead Status Unknown
	207 E FRONT STREET	Lead Status Unknown
	211 S CHERRY STREET	Lead Status Unknown
	302 S CHERRY STREET	Lead Status Unknown
	200 E FRONT STREET	Lead Status Unknown
	204 E FRONT STREET	Lead Status Unknown
	107 S CHERRY STREET	Lead Status Unknown
	203 E GRAND AVENUE	Lead Status Unknown
	715 S WEBB STREET	Lead Status Unknown
703 S Webb St	701 S WEBB STREET	Lead Status Unknown
705 S Webb St	701 S WEBB STREET	Lead Status Unknown
	711 S WEBB STREET	Lead Status Unknown
	710 S WEBB STREET	Lead Status Unknown
	704 S WEBB STREET	Lead Status Unknown
	713 S WEBB STREET	Lead Status Unknown
	719 S WEBB STREET	Lead Status Unknown
	706 S WEBB STREET	Lead Status Unknown
	701 S WEBB STREET	Lead Status Unknown
	611 S WEBB STREET	Lead Status Unknown
607 S Webb St	605 S WEBB STREET	Lead Status Unknown
	609 S WEBB STREET	Lead Status Unknown
	603 S WEBB STREET	Lead Status Unknown
	605 S WEBB STREET	Lead Status Unknown
	310 S HOWARD STREET	Lead Status Unknown
Park Restrooms	Park Restrooms	Lead Status Unknown
	600 S WEBB STREET	Lead Status Unknown
	601 S WEBB STREET	Lead Status Unknown
606 E Chippewa St	608 E CHIPPEWA STREET	Lead Status Unknown
	601 E ONEIDA STREET	Lead Status Unknown
	703 S ELLMS STREET	Lead Status Unknown
	100 S ELLMS STREET	Lead Status Unknown
	102 N ELLMS STREET	Lead Status Unknown
	208 S MILL STREET	Lead Status Unknown
	207 S ELLMS STREET	Lead Status Unknown
	317 W VINAL STREET	Lead Status Unknown
	504 S PROUTY STREET	Lead Status Unknown
	404 W VINAL STREET	Lead Status Unknown
	608 W SUMMIT STREET	Lead Status Unknown
	506 S PROUTY STREET	Lead Status Unknown
	207 W VINAL STREET	Lead Status Unknown
	500 S PROUTY STREET	Lead Status Unknown
	515 S WEBB STREET	Lead Status Unknown
	315 W VINAL STREET	Lead Status Unknown
	313 W VINAL STREET	Lead Status Unknown
	311 W VINAL STREET	Lead Status Unknown
	309 W VINAL STREET	Lead Status Unknown

	305 W VINAL STREET	Lead Status Unknown
	301 W REED STREET	Lead Status Unknown
	301 W VINAL STREET	Lead Status Unknown
	207 W REED STREET	Lead Status Unknown
	205 W REED STREET	Lead Status Unknown
	208 W REED STREET	Lead Status Unknown
	600 W SUMMIT STREET	Lead Status Unknown
	506 W SUMMIT STREET	Lead Status Unknown
	502 W SUMMIT STREET	Lead Status Unknown
	503 S GRANDVIEW STREET	Lead Status Unknown
	604 S GRANDVIEW STREET	Lead Status Unknown
	502 S GRANDVIEW STREET	Lead Status Unknown
	605 S GRANDVIEW STREET	Lead Status Unknown
	706 W SUMMIT STREET	Lead Status Unknown
	712 W SUMMIT STREET	Lead Status Unknown
	310 W REED STREET	Lead Status Unknown
	603 S CHURCH STREET	Lead Status Unknown
	701 S HARRISON STREET	Lead Status Unknown
	307 W MORTON STREET	Lead Status Unknown
	703 S HARRISON STREET	Lead Status Unknown
	716 S WEBB STREET	Lead Status Unknown
	714 S WEBB STREET	Lead Status Unknown
	722 S WEBB STREET	Lead Status Unknown
	720 S WEBB STREET	Lead Status Unknown
	718 S WEBB STREET	Lead Status Unknown
	800 HOME STREET	Lead Status Unknown
	800 S WEBB STREET	Lead Status Unknown
	721 S WEBB STREET	Lead Status Unknown
718 S Webb St 2nd WSL	718 S WEBB STREET	Lead Status Unknown
	504 NICHOLAS AVENUE	Lead Status Unknown
	803 HOME STREET	Lead Status Unknown
	801 BJORNSTAD DRIVE	Lead Status Unknown
	N6282 HOME STREET	Lead Status Unknown
	405 W COLLEGE AVENUE	Lead Status Unknown
	W18205 W COLLEGE AVENUE	Lead Status Unknown
	390 W COLLEGE AVENUE	Lead Status Unknown
	807 S GRANDVIEW STREET	Lead Status Unknown
	801 S GRANDVIEW STREET	Lead Status Unknown
	709 S HARRISON STREET	Lead Status Unknown
	407 W VINAL STREET	Lead Status Unknown
	411 W VINAL STREET	Lead Status Unknown
	500 W COLLEGE AVENUE	Lead Status Unknown
	406 W COLLEGE AVENUE	Lead Status Unknown
	408 W COLLEGE AVENUE	Lead Status Unknown
	403 W VINAL STREET	Lead Status Unknown
	702 S GRANDVIEW STREET	Lead Status Unknown
	603 W SUMMIT STREET	Lead Status Unknown

701 HOME STREET	Lead Status Unknown
W18414 COLLEGE AVENUE	Lead Status Unknown
709 W SUMMIT STREET	Lead Status Unknown
706 W COLLEGE AVENUE	Lead Status Unknown
701 S GRANDVIEW STREET	Lead Status Unknown
709 S GRANDVIEW STREET	Lead Status Unknown
606 W COLLEGE AVENUE	Lead Status Unknown
206 E WESTGOR AVENUE	Lead Status Unknown
302 E WESTGOR AVENUE	Lead Status Unknown
107 N MEISNER STREET	Lead Status Unknown
303 E WESTGOR AVENUE	Lead Status Unknown
204 E WESTGOR AVENUE	Lead Status Unknown
200 N GENESEE STREET	Lead Status Unknown
203 N GENESEE STREET	Lead Status Unknown
107 N GENESEE STREET	Lead Status Unknown
109 E PIONEER AVENUE	Lead Status Unknown
301 N HUNTER STREET	Lead Status Unknown
302 N HUNTER STREET	Lead Status Unknown
110 E WOOD AVENUE	Lead Status Unknown
118 E WOOD AVENUE	Lead Status Unknown
309 N GENESEE STREET	Lead Status Unknown
313 N HUNTER STREET	Lead Status Unknown
305 N HUNTER STREET	Lead Status Unknown
319 N GENESEE STREET	Lead Status Unknown
601 E PIONEER AVENUE	Lead Status Unknown
209 E PIONEER AVENUE	Lead Status Unknown
302 N MEISNER STREET	Lead Status Unknown
400 E WOOD AVENUE	Lead Status Unknown
309 E PIONEER AVENUE	Lead Status Unknown
306 N TAYLOR STREET	Lead Status Unknown
302 N TAYLOR STREET	Lead Status Unknown
315 N TAYLOR STREET	Lead Status Unknown
309 N TAYLOR STREET	Lead Status Unknown
305 N TAYLOR STREET	Lead Status Unknown
406 E WOOD AVENUE	Lead Status Unknown
303 N ELLMS STREET	Lead Status Unknown
309 N ELLMS STREET	Lead Status Unknown
313 N ELLMS STREET	Lead Status Unknown
317 N ELLMS STREET	Lead Status Unknown
316 N TAYLOR STREET	Lead Status Unknown
604 E WOOD AVENUE	Lead Status Unknown
700 E WOOD AVENUE	Lead Status Unknown
702 E WOOD AVENUE	Lead Status Unknown
314 N ELLMS STREET	Lead Status Unknown
308 N ELLMS STREET	Lead Status Unknown
304 N ELLMS STREET	Lead Status Unknown
600 E WOOD AVENUE	Lead Status Unknown

313 N MEISNER STREET	Lead Status Unknown
411 N GENESEE STREET	Lead Status Unknown
413 N GENESEE STREET	Lead Status Unknown
408 E PIONEER AVENUE	Lead Status Unknown
502 E PIONEER AVENUE	Lead Status Unknown
102 E PIONEER AVENUE	Lead Status Unknown
116 E PIONEER AVENUE	Lead Status Unknown
108 E PIONEER AVENUE	Lead Status Unknown
112 E PIONEER AVENUE	Lead Status Unknown
400 N GENESEE STREET	Lead Status Unknown
402 N GENESEE STREET UNIT 2	Lead Status Unknown
412 N GENESEE STREET	Lead Status Unknown
408 N GENESEE STREET	Lead Status Unknown
1660 SUE ALAN DRIVE	Lead Status Unknown
W18105 HEMLOCK ROAD	Lead Status Unknown
300 W GRAND AVENUE	Lead Status Unknown
302 S WEBB STREET	Lead Status Unknown
104 N HUMMINGBIRD STREET	Lead Status Unknown
106 N HUMMINGBIRD STREET	Lead Status Unknown
400 W GRAND AVENUE	Lead Status Unknown
105 S WEBB STREET	Lead Status Unknown
310 S PROUTY STREET	Lead Status Unknown
315 S WEBB STREET	Lead Status Unknown
409 S WEBB STREET	Lead Status Unknown
405 S WEBB STREET	Lead Status Unknown
401 S WEBB STREET	Lead Status Unknown
307 S PROUTY STREET	Lead Status Unknown
305 S PROUTY STREET	Lead Status Unknown
303 S PROUTY STREET	Lead Status Unknown
300 S PROUTY STREET	Lead Status Unknown
207 S PROUTY STREET	Lead Status Unknown
314 S PROUTY STREET	Lead Status Unknown
308 S PROUTY STREET	Lead Status Unknown
400 W WALKER STREET	Lead Status Unknown
403 W WALKER STREET	Lead Status Unknown
401 W WALKER STREET	Lead Status Unknown
309 W WALKER STREET	Lead Status Unknown
306 W VINAL STREET	Lead Status Unknown
305 W WALKER STREET	Lead Status Unknown
303 W WALKER STREET	Lead Status Unknown
300 W VINAL STREET	Lead Status Unknown
208 W VINAL STREET	Lead Status Unknown
300 W WALKER STREET	Lead Status Unknown
405 S PROUTY STREET	Lead Status Unknown
516 S WEBB STREET	Lead Status Unknown
511 S WEBB STREET	Lead Status Unknown
507 S WEBB STREET	Lead Status Unknown

	505 S WEBB STREET	Lead Status Unknown
	501 S WEBB STREET	Lead Status Unknown
	505 W WALKER STREET	Lead Status Unknown
	507 W WALKER STREET	Lead Status Unknown
	502 W WALKER STREET	Lead Status Unknown
	504 W WALKER STREET	Lead Status Unknown
	501 W WALKER STREET	Lead Status Unknown
	407 W WALKER STREET	Lead Status Unknown
	404 W WALKER STREET	Lead Status Unknown
	405 W WALKER STREET	Lead Status Unknown
1	1001 E MOHAWK STREET	Lead Status Unknown
2	1001 E MOHAWK STREET	Lead Status Unknown
	601 S ELLMS STREET	GRR
	600 E PIONEER AVENUE	Lead Status Unknown
	411 N ELLMS STREET	Lead Status Unknown
	408 N ELLMS STREET	Lead Status Unknown
	508 E PIONEER AVENUE	Lead Status Unknown
	201 E PIONEER AVENUE	Lead Status Unknown
	503 W COLLEGE AVENUE	Lead Status Unknown
	308 E WOOD AVENUE	Lead Status Unknown
	307 E WOOD AVENUE	Lead Status Unknown
	314 N GENESEE STREET	Lead Status Unknown
	305 E WOOD AVENUE	Lead Status Unknown
	409 N HUNTER STREET	Lead Status Unknown
	302 E WOOD AVENUE	Lead Status Unknown
	304 E WOOD AVENUE	Lead Status Unknown
	204 N GENESEE STREET	Lead Status Unknown
	413 N HUNTER STREET	Lead Status Unknown
	308 S ELLMS STREET	Lead Status Unknown
2nd WSL	401 N HUNTER STREET	Lead Status Unknown
House	401 N HUNTER STREET	Lead Status Unknown
	415 N HUNTER STREET	Lead Status Unknown
	500 N HUNTER STREET	Lead Status Unknown
	414 N HUNTER STREET	Lead Status Unknown
	410 N HUNTER STREET	Lead Status Unknown
	406 N HUNTER STREET	Lead Status Unknown
	412 N HUNTER STREET	Lead Status Unknown
	509 S PROUTY STREET	Lead Status Unknown
	609 S HARRISON STREET	Lead Status Unknown
	605 S HARRISON STREET	Lead Status Unknown
	N7198 US 45 HWY	Lead Status Unknown
	302 S HOWARD STREET	Lead Status Unknown
	104 E VINAL STREET	Lead Status Unknown
	507 E VINAL STREET	Lead Status Unknown
	207 S MISSION STREET	Lead Status Unknown
	607 E PIONEER AVENUE	Lead Status Unknown
	601 E CHIPPEWA STREET	Lead Status Unknown

	312 N HUNTER STREET	Lead Status Unknown
	401 W GRAND AVENUE	Lead Status Unknown
	705 S HARRISON STREET	Lead Status Unknown
	W18241 W COLLEGE AVENUE	Lead Status Unknown
	707 W COLLEGE AVENUE	Lead Status Unknown
	607 W COLLEGE AVENUE	Lead Status Unknown
	102 S WEBB STREET	Lead Status Unknown
	200 W WALKER STREET	Lead Status Unknown
	206 W WALKER STREET	Lead Status Unknown
	311 S PROUTY STREET	Lead Status Unknown
	506 W WALKER STREET	Lead Status Unknown
14	901 S HARRISON STREET	Lead Status Unknown
3	901 S HARRISON STREET	Lead Status Unknown
12	901 S HARRISON STREET	Lead Status Unknown
5	901 S HARRISON STREET	Lead Status Unknown
1	901 S HARRISON STREET	Lead Status Unknown
2	901 S HARRISON STREET	Lead Status Unknown
4	901 S HARRISON STREET	Lead Status Unknown
6	901 S HARRISON STREET	Lead Status Unknown
8	901 S HARRISON STREET	Lead Status Unknown
10	901 S HARRISON STREET	Lead Status Unknown
13	901 S HARRISON STREET	Lead Status Unknown
9	901 S HARRISON STREET	Lead Status Unknown
7	901 S HARRISON STREET	Lead Status Unknown
9	503 E WOOD AVENUE	Lead Status Unknown
1	310 S WEBB STREET	Lead Status Unknown
16	901 S HARRISON STREET	Lead Status Unknown
	903 S HARRISON STREET	Lead Status Unknown
15	901 S HARRISON STREET	Lead Status Unknown
314	310 S WEBB STREET	Lead Status Unknown
316	310 S WEBB STREET	Lead Status Unknown
312	310 S WEBB STREET	Lead Status Unknown
310	310 S WEBB STREET	Lead Status Unknown
4	4	Lead Status Unknown
2	2	Lead Status Unknown
318	310 S WEBB STREET	Lead Status Unknown
320	310 S WEBB STREET	Lead Status Unknown
5	5	Lead Status Unknown
3	3	Lead Status Unknown
	100 W VINAL STREET	Lead Status Unknown
	200 E VINAL STREET	Lead Status Unknown
	102 E VINAL STREET	Lead Status Unknown
	410 S HOWARD STREET	Lead Status Unknown
	406 S HOWARD STREET	Lead Status Unknown
	405 S HOWARD STREET	Lead Status Unknown
	103 E REED STREET	Lead Status Unknown
	407 S HOWARD STREET	Lead Status Unknown

	102 W VINAL STREET	Lead Status Unknown
	106 W VINAL STREET	Lead Status Unknown
	114 W VINAL STREET	Lead Status Unknown
	403 S HOWARD STREET	Lead Status Unknown
	105 W WALKER STREET	Lead Status Unknown
	104 W WALKER STREET	Lead Status Unknown
	301 S PROUTY STREET	Lead Status Unknown
	406 E FRONT STREET	Lead Status Unknown
	107 W VINAL STREET	Lead Status Unknown
	206 E GRAND AVENUE	Lead Status Unknown
4	503 E WOOD AVENUE	Lead Status Unknown
	106 N ELLMS STREET	Lead Status Unknown
	401 E PIONEER AVENUE	Lead Status Unknown
	319 N HUNTER STREET	Lead Status Unknown
	409 E WESTGOR AVENUE	Lead Status Unknown
	301 S CHERRY STREET	Lead Status Unknown
	704 E REED STREET	Lead Status Unknown
	604 JASON AVENUE	Lead Status Unknown
	713 W SUMMIT STREET	Lead Status Unknown
	706 HOME STREET	Lead Status Unknown
	706 S HARRISON STREET	Lead Status Unknown
11	901 S HARRISON STREET	Lead Status Unknown
	604 W SUMMIT STREET	Lead Status Unknown
	401 W COLLEGE AVENUE	Lead Status Unknown
	306 W WALKER STREET	Lead Status Unknown
	204 W SCHOOL STREET	Lead Status Unknown
	410 N ELLMS STREET	Lead Status Unknown
	307 S MILL STREET	Lead Status Unknown
	203 E FRONT STREET	Lead Status Unknown
	205 S ELLMS STREET	Lead Status Unknown
	306 N MEISNER STREET	Lead Status Unknown